



## Compressor Valeo **TM-16**

# Provides the largest cubic displacement in its class

At 10 in<sup>3</sup> (164 cm<sup>3</sup>) displacement, the TM-16 compressor has the largest displacement in the light transit segment today.

Its capacity at idle is virtually unmatched in the marketplace and has a proven track record of superior durability.

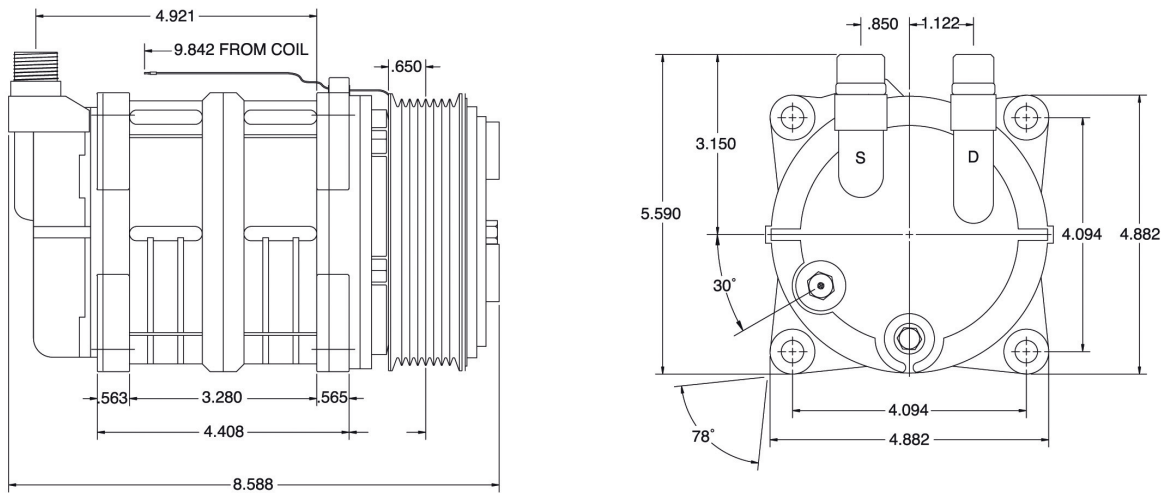


### Features

- Six cylinder, balanced swash plate design offers low pulsation noise, quiet and smooth operation, less vibration and lower horsepower requirements
- Ball and shoe design promotes lubrication for better compressor durability
- Lip shaft seal assures excellent sealing integrity and extends compressor life
- Needle bearings insure high durability for long life and high speed operation
- Coated steel swash plate provides additional protection during liquid slugging, and high load conditions

# Compressor Valeo TM-16

MCC Compressors



## Technical Data

Rotation	CW or CCW
Max speed	700 – 6000 rpm
Clutch coil	12 or 24 VDC
Displacement	10 in <sup>3</sup> (164 cm <sup>3</sup> )
Number of pistons	6
Refrigerant	R134a
Pulleys	2A/6PK/8PK/10PK
Mounting	Ear or direct
Unloading steps	N/A
Oil charge	ZXL 6.6 fl.oz (180 cm <sup>3</sup> )
Weight (with clutch)	15.7 lbs (7.1 kg)

